



UNIVERSITY of
ST. AUGUSTINE for
HEALTH SCIENCES

NURSE PRACTITIONER PROGRAMS



***EXPAND YOUR CREDENTIALS AND
ELEVATE YOUR CAREER***

ADVANCE WITHIN A THRIVING PROFESSION

**Do you want to advance your credentials and
open more doors in your nursing career?**

USAHS' online nursing programs offer a supportive, flexible and personalized grad school experience. You will work with your faculty and academic advisors to select a study plan that fits your busy life.

**Scan the QR code to see what our
School of Nursing can offer to you.**



TABLE OF CONTENTS

Page 2	Why USAHS?
Page 4	Why Choose a Nurse Practitioner Role?
Page 6	USAHS Master of Science in Nursing (MSN)
Page 7	Master of Science in Nursing Role Specialties
Page 8	RN to MSN Curriculums
Page 11	BSN-Entry MSN Curriculums
Page 14	Master of Science in Nursing Admission Requirements
Page 15	Master of Science in Nursing Application Requirements
Page 16	USAHS Doctor of Nursing Practice (DNP)
Page 17	Doctor of Nursing Practice Role Specialty
Page 18	BSN-Entry DNP Curriculum
Page 20	Doctor of Nursing Practice Admission Requirements
Page 21	Doctor of Nursing Practice Application Requirements
Page 22	USAHS Post-Graduate Nursing Certificate & Role Specialties
Page 23	Post-Graduate Nursing Certificate Curriculums
Page 25	Post-Graduate Nursing Certificate Admission Requirements
Page 26	Post-Graduate Nursing Certificate Application Requirements
Page 27	Contact Us

WHY USAHS?

FLEXIBLE, PERSONALIZED NURSING PROGRAMS BECAUSE YOU MATTER

At the University of St. Augustine for Health Sciences, we want our nurses to feel valued and individually catered to. We've designed our nursing programs to be tailored to your individual lifestyle, with the flexibility and convenience of online learning, multiple start dates, and different pacing options that allow you to accelerate and decelerate your studies based on your needs.*

Our students benefit from an interprofessional education and intensives that feature the very latest simulation and technology. Throughout your program you'll be supported by a dedicated team working closely with you to secure your clinical placement and ensure it's optimal for your learning experience.

YOU MATTER

As a nurse, your contribution to society is immeasurable. We ensure our nurses feel valued and supported.

WE PROVIDE

A personal experience tailored to your individual needs and goals that prepares you for advanced practice nursing.

*While USAHS does not offer Title IV financial aid for any term in which an accelerated learning course is taken without a full term "Anchor" course, other financing alternatives may be available. Please refer to the Financial Aid page on our website for additional information.



WHY USAHS?

- Programs are online and designed by doctoral prepared faculty
- Dedicated clinical placement support early in your program
- Flexible programs that you can accelerate or decelerate based on your needs*
- Interprofessional education and intensives that prepare you for the future of healthcare
- State-of-the-art simulation, technology and immersions
- Offering programs with multiple entry points based on your education journey

40+ years in graduate health sciences education

100% doctoral prepared faculty

1-ON-1 faculty support and mentorship

THE USAHS ADVANTAGE

Acceleration Options

Our nursing programs offer individualized study plans for those wishing to earn their degree faster.

Multiple Role Specialties

We offer three NP clinical role specialties—Family Nurse Practitioner, Psychiatric Mental Health Nurse Practitioner and Adult Gerontology Nurse Practitioner (call for availability).

Flexibility

Choose a study plan and select a start date that best fits your lifestyle.

Online + Hands-On

Complete your required online coursework on a schedule that meets your lifestyle. Optional virtual immersions are held at convenient times.

Interprofessional

Students from other USAHS programs learn together and practice working in a team. You will contribute your nursing perspective to solving patient problems in collaborative scenarios.

State-of-the-Art Technology

Our cutting-edge learning and clinical tools promote technological literacy and inspire confidence, preparing you for tomorrow's healthcare profession.

Personalized Support

Receive one-on-one support from our practicum faculty to assess your needs and monitor your progress. Our personalized clinical placement concierge helps secure your practica placement when the time comes.

Clinical Success

Work with fellow students and faculty in face-to-face clinical simulations utilizing the very latest technologies. Focus on the critical skills you need to develop clinical competence and confidence in a safe and supportive environment.

Always Here for You

Our strong alumni association provides many opportunities for existing students, including professional development, career advancement and social connection.

*While USAHS does not offer Title IV financial aid for any term in which an accelerated learning course is taken without a full term "Anchor" course, other financing alternatives may be available. Please refer to the Financial Aid page on our website for additional information.

WHY CHOOSE NP ROLE?

YOU CARE ABOUT YOUR PATIENTS WE CARE ABOUT YOU



I recommend USAHS' FNP program because of its flexibility and instructor support. The online learning is in a format that is easy to navigate and very accommodating to working students.

KIM J.
USAHS FNP student

Here's why becoming a nurse practitioner makes sense for your career ...

As the saying goes, "The more you learn, the more you earn." Being able to capitalize on your hard-earned experience by advancing your education always makes sense. As a nurse practitioner, you'll be part of the fastest growing fields in the U.S., with consistent and well documented financial reward, according to the latest figures from the U.S. Bureau of Labor Statistics.

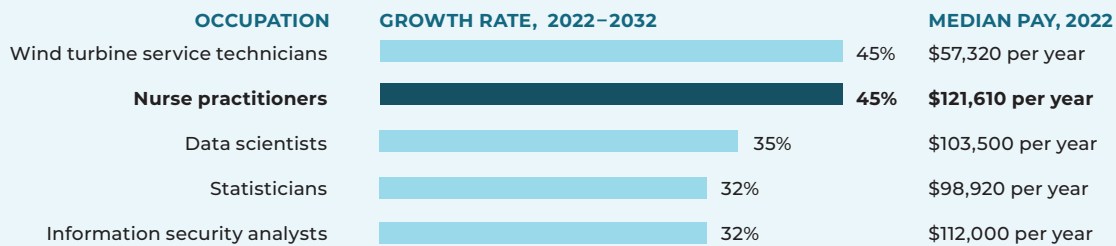
- You'll continue making a difference.
- You have the opportunity to boost your earnings potential.
- You can specialize in an area that really interests you.
- Nurse practitioners are in huge demand and are projected to continue to be for the next decade.

See charts on next page. ▶



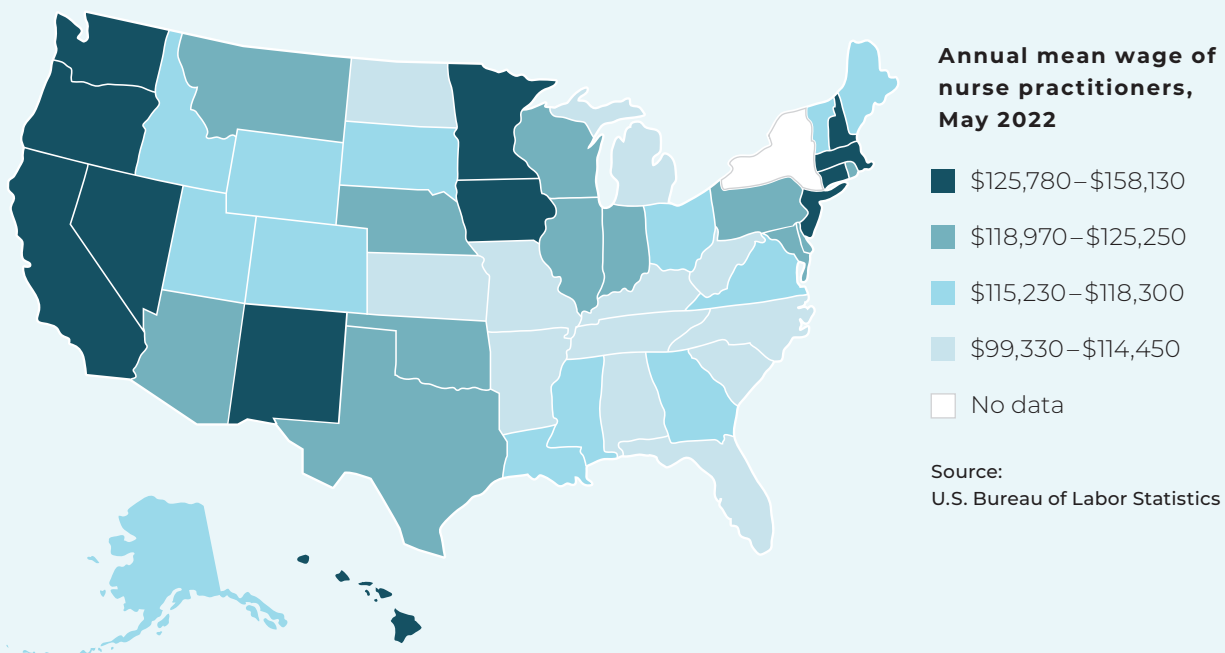
LET THE NUMBERS TALK

According to the U.S. Bureau of Labor Statistics Occupational Outlook Handbook,* nurse practitioner is one of the fastest growing occupations in the United States, with a projected growth rate of 45% between 2022 and 2032. The median pay for nurse practitioners in the United States in 2022 was \$121,610 per year.



Source: U.S. Bureau of Labor Statistics, Occupational Outlook Handbook
*updated September 2023

According to the U.S. Bureau of Labor Statistics, the annual mean wage of nurse practitioners in May 2022 ranged from \$99,330–\$114,450 in the lowest paying states to \$125,780–\$158,130 in the highest. The top-paying states for nurse practitioners are California, New Jersey, Massachusetts, Oregon and Nevada.



CHOOSE YOUR ENTRY POINT TO MSN

We offer two pathways into your studies for your new career

You already know you love nursing, and you have lots of experience. You're an RN and you may even have your undergraduate nursing degree. You know it's time to advance your career.

At USAHS, we do everything we can to help you succeed. We want you to be the best, and we equip you with the tools, strategies and skills to meet the demands of higher-level roles in the field you love. Earning your Master of Science in Nursing (MSN) at USAHS prepares you for an innovative leadership role in today's global healthcare system.



RN to MSN

You have your associate degree and your RN license. You're an experienced RN and you're ready to be a nurse practitioner.

We offer bridge courses that will lead you into your MSN!

Choose one of three clinical role specialties:

Family Nurse Practitioner (FNP)

Psychiatric Mental Health Nurse Practitioner (PMHNP)

Adult Gerontology Nurse Practitioner (AGNP) (call for availability)



BSN-Entry MSN

You have your undergraduate nursing degree, your RN license and experience under your belt. You're looking for the next step and a higher-level role.

Choose one of three clinical role specialties:

Family Nurse Practitioner (FNP)

Psychiatric Mental Health Nurse Practitioner (PMHNP)

Adult Gerontology Nurse Practitioner (AGNP) (call for availability)

See Page 14-15 for MSN admission requirements and how to apply!

CHOOSE YOUR NEW ROLE, PURSUE YOUR FUTURE



Family Nurse Practitioner (FNP)

Expand your clinical practice beyond hospital settings. You'll learn to help people of all ages by diagnosing and treating conditions, prescribing medication and ordering tests, and working from a strong focus on health promotion and education to improve patient outcomes.

Psychiatric Mental Health Nurse Practitioner (PMHNP)

A vital clinical role, this specialty prepares you to help people with mental health conditions. You'll learn how to provide a full range of specialized services that together constitute mental health and psychiatric care and treatment. You'll prepare to assess and diagnose patients, prescribe medications and provide therapy interventions. You may also oversee case management, undertake policy development for programs, and engage in comprehensive advocacy education and research.



Adult Gerontology Nurse Practitioner (AGNP)

In our AGNP role specialty, you'll learn protocols for assessing patients, diagnosing conditions, and prescribing medication and other treatments—as well as strategies for preventing illness and promoting wellness throughout adulthood. You'll explore how to address the cultural, psychological and social aspects of aging. You will also help meet society's demand for more nurse practitioners. (Call for availability.)

MASTER OF SCIENCE IN NURSING CURRICULUMS

Depending on the role specialty you choose and your entry qualification, your path to becoming a better practitioner is an 8-11 trimester* commitment.

RN TO MSN

Family Nurse Practitioner Curriculum

The online MSN FNP includes three practica and one on-campus intensive. But don't worry. Our clinical concierge helps you find the right practica placement when you need it so you stay on track with your program. Your practicum faculty stays with you throughout your program.

Family Nurse Practitioner (FNP) Role Specialty	Credit Hours
Trimester 1	
NUR 6001 Clinical Leadership	3
NUR 6005 Patient Safety, Quality and Just Culture	3
Trimester 2	
NUR 6009 Ethical, Legal and Health Policy	3
NUR 6013 Scholarly Inquiry	3
Trimester 3	
IPE 7121 Organizational Leadership and Policy in Health Care	3
Trimester 4	
IPE 7400 Healthcare Informatics and Technology Management	3
NUR 7161 Theoretical and Scientific Underpinnings for Nursing Practice	3
Trimester 5	
IPE 7421 Interprofessional Approaches to Regional and Global Population Health	3
NUR 7050 Evidence-Based Practice for Nurse Leaders (22.5 indirect contact hours) ■	3
Trimester 6	
NUR 7560 Advanced Pharmacology	3
NUR 7610 Advanced Physiology and Pathophysiology	3
Trimester 7	
NUR 7570 Primary Healthcare of the Family I REQUIRED INTENSIVE	3
NUR 7580 Advanced Health Assessment and Differential Diagnosis	3
Trimester 8	
NUR 7575 Primary Healthcare of the Family II	3
NUR 7571 FNP Role Practicum I (180 contact hours) ◆	4
Trimester 9	
NUR 7572 FNP Role Practicum II (180 contact hours) ◆	4
NUR 7585 Primary Healthcare of the Family III	3
Trimester 10	
NUR 7573 FNP Role Practicum III (225 contact hours) ◆	5
NUR 7574 MSN Capstone 1	1
Total Credit Hours for the Family Nurse Practitioner Role Specialty	59

*Time to completion may vary by student, depending on individual progress, credits transferred and other factors.

RN TO MSN

Psychiatric Mental Health Nurse Practitioner Curriculum

This role specialty is designed to be completed in 11 trimesters* and requires 630 contact hours.

Psychiatric Mental Health Nurse Practitioner Role Specialty	Credit Hours
Trimester 1	
NUR 6001 Clinical Leadership	3
NUR 6005 Patient Safety, Quality and Just Culture	3
Trimester 2	
NUR 6009 Ethical, Legal and Health Policy	3
NUR 6013 Scholarly Inquiry	3
Trimester 3	
IPE 7121 Organizational Leadership and Policy in Health Care	3
Trimester 4	
NUR 7050 Evidence-Based Practice for Nurse Leaders (22.5 indirect contact hours) ■	3
NUR 7161 Theoretical and Scientific Underpinnings for Nursing Practice	3
Trimester 5	
NUR 7560 Advanced Pharmacology	3
NUR 7610 Advanced Physiology and Pathophysiology	3
Trimester 6	
NUR 7580 Advanced Health Assessment and Differential Diagnosis	3
NUR 7310 Advanced Neurobiology and Psychopathophysiology	3
Trimester 7	
NUR 7315 Advanced Psychopharmacology	3
NUR 7330 Psychotherapy for Psychiatric Mental Health Nurse Practitioner Practice	3
Trimester 8	
NUR 7350 PMHNP: Acute and Chronic Management of Child/Adolescent with Psychiatric Mental Health Conditions	3
NUR 7541 PMHNP Role Practicum I Child & Adolescent Populations (180 contact hours) ◆	4
Trimester 9	
NUR 7375 PMHNP: Acute and Chronic Management of the Adult and Older Adult with Psychiatric Mental Health Conditions	3
NUR 7542 PMHNP Role Practicum II Adult and Older Adult Populations (180 contact hours) ◆	4
Trimester 10	
NUR 7327 APRN Transition to Practice	2
NUR 7543 PMHNP Role Practicum III Diverse/Special Populations (225 contact hours) ◆	5
Trimester 11	
NUR 7577 PMHNP MSN Community Engagement Capstone Project (3 didactic, 45 contact hours)	4
Total Credit Hours for the PMHNP Role Specialty	64

Ready to go? Have questions?
Connect with a USAHS Enrollment Advisor at (800) 241-1027 or email us at enroll@usa.edu

■ Course requires practicum hours.

◆ Course offers optional immersion.

See page 14-15 for MSN admission requirements and how to apply!

*Time to completion may vary by student, depending on individual progress, credits transferred and other factors.

RN TO MSN

Adult Gerontology Nurse Practitioner Curriculum

This role specialty is designed to be completed in 10 trimesters* and requires 630 contact hours.

Adult Gerontology Nurse Practitioner Role Specialty (call for availability)	Credit Hours
Trimester 1	
NUR 6001 Clinical Leadership	3
NUR 6005 Patient Safety, Quality and Just Culture	3
Trimester 2	
NUR 6009 Ethical, Legal and Health Policy	3
NUR 6013 Scholarly Inquiry	3
Trimester 3	
IPE 7121 Organizational Leadership and Policy in Health Care	3
Trimester 4	
NUR 7161 Theoretical and Scientific Underpinnings for Nursing Practice	3
IPE 7400 Healthcare Informatics and Technology Management	3
Trimester 5	
NUR 7050 Evidence-Based Practice for Nurse Leaders (22.5 indirect contact hours) ■	3
IPE 7421 Interprofessional Approaches to Regional and Global Population Health	3
Trimester 6	
NUR 7560 Advanced Pharmacology	3
NUR 7610 Advanced Physiology and Pathophysiology	3
Trimester 7	
NUR 7210 Adult Gerontology Primary Healthcare Part I	4
NUR 7580 Advanced Health Assessment and Differential Diagnosis	3
Trimester 8	
NUR 7235 Adult Gerontology Primary Healthcare Part II	4
NUR 7551 AGNP Role Practicum I (180 contact hours) ◆	4
Trimester 9	
NUR 7250 Adult Gerontology Primary Healthcare Part III	4
NUR 7552 AGNP Role Practicum II (180 contact hours) ◆	4
Trimester 10	
NUR 7553 AGNP Role Practicum III (225 contact hours) ◆	5
NUR 7576 MSN-AGNP Capstone (45 contact hours)	4
Total Credit Hours for the AGNP Role Specialty	64

*Time to completion may vary by student, depending on individual progress, credits transferred and other factors.

BSN-ENTRY MSN

Family Nurse Practitioner Curriculum

This role specialty is designed to be completed in eight trimesters* and includes an intensive.

Family Nurse Practitioner (FNP) Role Specialty	Credit Hours
Trimester 1	
IPE 7001 Interprofessional Education and Collaborative Practice ■	3
IPE 7001B Interprofessional Education and Collaborative Practice (B)	
IPE 7121 Organizational Leadership and Policy in Health Care	3
IPE 7121B Organizational Leadership and Policy in Health Care (B)	
Trimester 2	
NUR 7610 Advanced Physiology and Pathophysiology	3
NUR 7050 Evidence-Based Practice for Nurse Leaders (22.5 indirect contact hours) ■	3
Trimester 3	
NUR 7560 Advanced Pharmacology	3
NUR 7161 Theoretical and Scientific Underpinnings for Nursing Practice	3
Trimester 4	
IPE 7421 Interprofessional Approaches to Regional and Global Population Health	3
IPE 7421B Interprofessional Approaches to Regional and Global Population Health (B)	
NUR 7580 Advanced Health Assessment and Differential Diagnosis	3
Trimester 5	
IPE 7400 Healthcare Informatics and Technology Management	3
NUR 7570 Primary Healthcare of the Family I REQUIRED INTENSIVE	3
Trimester 6	
NUR 7575 Primary Healthcare of the Family II	3
NUR 7571 FNP Role Practicum I (180 contact hours) ◆	4
Trimester 7	
NUR 7585 Primary Healthcare of the Family III	3
NUR 7572 FNP Role Practicum II (180 contact hours) ◆	4
Trimester 8	
NUR 7573 FNP Role Practicum III (225 contact hours) ◆	5
NUR 7574 MSN Capstone	1
Total Credit Hours for the Family Nurse Practitioner Role Specialty	50

Ready to go? Have questions?
Connect with a USAHS Enrollment Advisor at (800) 241-1027 or email us at enroll@usa.edu

■ Course requires practicum hours.

◆ Course offers optional immersion.

See page 14-15 for MSN admission requirements and how to apply!

*Time to completion may vary by student, depending on individual progress, credits transferred and other factors.

BSN-ENTRY MSN

Psychiatric Mental Health Nurse Practitioner Curriculum

This role specialty is designed to be completed in nine trimesters.*

Psychiatric Mental Health Nurse Practitioner Role Specialty	Credit Hours
Trimester 1	
IPE 7001 Interprofessional Education and Collaborative Practice or IPE 7001B Interprofessional Education and Collaborative Practice (B) ■	3
IPE 7121 Organizational Leadership and Policy in Health Care or IPE 7121B Organizational Leadership and Policy in Health Care (B) ■	3
Trimester 2	
NUR 7050 Evidence-Based Practice for Nurse Leaders (22.5 indirect contact hours) ■	3
NUR 7610 Advanced Physiology and Pathophysiology	3
Trimester 3	
NUR 7161 Theoretical and Scientific Underpinnings for Nursing Practice	3
NUR 7580 Advanced Health Assessment and Differential Diagnosis	3
Trimester 4	
NUR 7560 Advanced Pharmacology	3
NUR 7310 Advanced Neurobiology and Psychopathophysiology	3
Trimester 5	
NUR 7315 Advanced Psychopharmacology	3
NUR 7330 Psychotherapy for Psychiatric Mental Health Nurse Practitioner Practice	3
Trimester 6	
NUR 7350 PMHNP: Acute and Chronic Management of Child/Adolescent with Psychiatric Mental Health Conditions	3
NUR 7541 PMHNP Role Practicum I Child & Adolescent Populations (180 contact hours) ◆	4
Trimester 7	
NUR 7375 PMHNP: Acute and Chronic Management of the Adult and Older Adult with Psychiatric Mental Health Conditions	3
NUR 7542 PMHNP Role Practicum II Adult and Older Adult Populations (180 contact hours) ◆	4
Trimester 8	
NUR 7327 APRN Transition to Practice	2
NUR 7543 PMHNP Role Practicum III Diverse/Special Populations (225 contact hours) ◆	5
Trimester 9	
NUR 7577 PMHNP MSN Community Engagement Capstone Project (3 didactic, 45 contact hours)	4
Total Credit Hours for the PMHNP Role Specialty	55

*Time to completion may vary by student, depending on individual progress, credits transferred and other factors.

BSN-ENTRY MSN

Adult Gerontology Nurse Practitioner Curriculum

This role specialty is designed to be completed in eight trimesters.*

Adult Gerontology Nurse Practitioner Role Specialty (call for availability)	Credit Hours
Trimester 1	
IPE 7001 Interprofessional Education and Collaborative Practice or IPE 7001B Interprofessional Education and Collaborative Practice (B) ■	3
IPE 7121 Organizational Leadership and Policy in Health Care or IPE 7121B Organizational Leadership and Policy in Health Care (B) ■	3
Trimester 2	
NUR 7050 Evidence-Based Practice for Nurse Leaders (22.5 indirect contact hours) ■	3
NUR 7610 Advanced Physiology and Pathophysiology	3
Trimester 3	
NUR 7161 Theoretical and Scientific Underpinnings for Nursing Practice	3
NUR 7560 Advanced Pharmacology	3
Trimester 4	
IPE 7421 Interprofessional Approaches to Regional and Global Population Health or IPE 7421B Interprofessional Approaches to Regional and Global Population Health (B)*	3
NUR 7580 Advanced Health Assessment and Differential Diagnosis	3
Trimester 5	
IPE 7400 Healthcare Informatics and Technology Management	3
NUR 7210 Adult Gerontology Primary Healthcare Part I	4
Trimester 6	
NUR 7235 Adult Gerontology Primary Healthcare Part II	3
NUR 7551 AGNP Role Practicum I (180 contact hours) ◆	4
Trimester 7	
NUR 7250 Adult Gerontology Primary Healthcare Part III	3
NUR 7552 AGNP Role Practicum II (180 contact hours) ◆	4
Trimester 8	
NUR 7553 AGNP Role Practicum III (225 contact hours) ◆	5
NUR 7576 MSN-AGNP Capstone (45 contact hours)	4
Total Credit Hours for the AGNP Role Specialty	55

Ready to go? Have questions?

Connect with a USAHS Enrollment Advisor at (800) 241-1027 or email us at enroll@usa.edu

■ Course requires practicum hours.

◆ Course offers optional immersion.

See page 14-15 for MSN admission requirements and how to apply!

*Time to completion may vary by student, depending on individual progress, credits transferred and other factors.

KICKSTART YOUR FUTURE

MSN ADMISSION REQUIREMENTS

To be considered for admission to the Master of Science in Nursing (MSN) program, candidates must possess or provide evidence of the following:

- An associate degree in nursing (ADN) with a cumulative GPA of 2.8 or higher on a 4.0 scale (RN-entry only)
- A bachelor's degree in nursing (BSN) with a cumulative GPA of 2.8 or higher on a 4.0 scale (BSN-entry only)
- Official transcripts from each college or university previously attended
- An unrestricted/unencumbered registered nurse (RN) license in the state of residence
- Professional resume or CV demonstrating the equivalent of one full-time year of experience as a registered nurse (RN-entry) or one full-time year of experience as a registered nurse by the time you intend to start your first practicum course (BSN-entry)
- Essay of approximately 500 words describing your short- and long-term career goals and how you plan to achieve them (BSN-entry only)
- Comprehensive background checks requiring fingerprints and drug test will be administered after acceptance into the program and at the applicant's expense. A felony charge and/or conviction may affect a graduate's ability to sit for the certification examination or to attain state licensure.
- Two professional references from a nurse educator, preceptor or immediate supervisor

Candidates may also be invited for an interview.

More information on admission requirements and how to apply is available on the Master of Science in Nursing page at usa.edu, including additional requirements for those who completed their undergraduate education abroad.



MSN APPLICATION REQUIREMENTS

We're here to support you on your education journey.
Begin your application today!

1. Before You Apply

Be sure you have an active, unencumbered RN license.



Request transcripts from each higher education institution you've attended. Have them emailed or mailed to USAHS.



Use Nursys to obtain a copy of your nursing license.



- Update your professional resume, showing 2,080 hours as an RN (RN-entry) or 2,000 hours as an RN by the time of your first practicum (BSN-entry).
- Write your entrance essay.



Line up two professional references.

2. Fill Out Your Application



Create an account to begin the free online application on our website.



Under the Admissions Documents tab, follow the directions to upload your nursing license, resume and essay.



Input your references' contact information.



Click "Submit for Review." Contact your EA so they can review your application and move it forward to Admissions.

HAVE QUESTIONS?

Contact an Enrollment Advisor today at enroll@usa.edu!

DOCTOR OF NURSING PRACTICE (DNP)

YOUR ENTRY POINT TO DNP

The Doctor of Nursing Practice (DNP) program at USAHS gives working nurses additional education in competencies such as systems leadership, healthcare policy, interprofessional collaboration, evidence-based practice and health information systems. The DNP program is among the highest-level nursing programs available.

BSN-Entry DNP

You've earned your bachelor's degree and amassed extensive experience. You are ready to become a leader.

For BSN-entry DNP, we offer the Family Nurse Practitioner role specialty.



DOCTOR OF NURSING PRACTICE (DNP)

ELEVATE YOUR NURSING CAREER TO THE HIGHEST LEVEL



Your New Leadership Role

Nurses educated at the doctoral level have the knowledge to influence health outcomes by caring for patients, advocating for better healthcare policies or leading organizations. In short, they have a bigger impact in the health science industry. Our online Doctor of Nursing Practice program is offered as BSN-entry with an FNP option, or as a post-specialty MSN-entry.

Family Nurse Practitioner (FNP)

Family nurse practitioners play a critical role in improving the primary patient care experience. As an FNP graduate and advanced practice nurse, you'll partner with families across the lifespan to promote preventative care, diagnose conditions, and treat acute and chronic illnesses.

Students who choose the FNP will have online coursework and one required on-campus clinical intensive. A practicum of 1,035 hours is required along with 71 credit hours. This role specialty is designed to be completed in 12 trimesters.*



*Time to completion may vary by student, depending on individual progress, credits transferred and other factors.



DOCTOR OF NURSING PRACTICE CURRICULUM

Your path to becoming an impactful practitioner is a 12 trimester* commitment, and we'll be with you all the way.

We want you to succeed. Experience our state-of-the-art technologies and a program that is flexible and personalized. Our outstanding staff and top-of-the-line curriculum will give you confidence that you're making the right choice for your DNP program.

BSN-ENTRY DNP

Family Nurse Practitioner Curriculum

The online DNP Family Nurse Practitioner program includes six practica and one on-campus intensive. But don't worry. Our clinical concierge service helps you find the right practica placement when you need it so you stay on track with your program. Your practicum faculty stays with you throughout your program. The DNP-FNP program is designed to be completed in 12 trimesters,* which includes 1,035 contact hours.

BSN-Entry DNP Family Nurse Practitioner (FNP) Role Specialty	Credit Hours
Trimester 1	
IPE 7001 Interprofessional Education and Collaborative Practice ■	3
IPE 7001B Interprofessional Education and Collaborative Practice ■	
IPE 7121 Organizational Leadership and Policy in Healthcare	3
IPE 7121B Organizational Leadership and Policy in Healthcare	
Trimester 2	
NUR 7050 Evidence-Based Practice for Nurse Leaders (22.5 indirect contact hours) ■	3
IPE 7421 Interprofessional Approaches to Regional and Global Population Health	3
IPE 7421B Interprofessional Approaches to Regional and Global Population Health	
Trimester 3	
NUR 7610 Advanced Physiology and Pathophysiology	3
NUR 7161 Theoretical and Scientific Underpinnings for Nursing Practice	3
Trimester 4	
NUR 7560 Advanced Pharmacology	3
IPE 7400 Healthcare Informatics and Technology Management	3
IPE 7400B Healthcare Informatics and Technology Management	
Trimester 5	
NUR 7580 Advanced Health Assessment and Differential Diagnosis	3
HSA 7236 Accounting, Finance and Economics for the Healthcare Leader	3
Trimester 6	
NUR 7570 Primary Healthcare of the Family I REQUIRED INTENSIVE	3
HSA 7260 Operations and Quality Management in Healthcare	3

Table continues on next page. ►

Trimester 7

NUR 7571 FNP Role Practicum I (4) (180 contact hours) ◆ 4

NUR 7230 Program/Project Planning and Management for Evidence-Based Practice and Policy Change 3

Trimester 8

NUR 7575 Primary Healthcare of the Family II 3

NUR 7525 Data-Driven Evaluation and Clinical Analytics for Outcomes Improvement 3

Trimester 9

NUR 7572 FNP Role Practicum II (4) (180 contact hours) ◆ 4

NUR 7801 DNP Practicum I (3) (135 contact hours) ◆ 3

NUR 7455 Special Topics in Professional Nursing Practice ◆ 1-4
*Required only for Arkansas students who must complete at least one credit hour. This course is not eligible for Title IV Financial Aid.***Trimester 10**

NUR 7585 Primary Healthcare of the Family III 3

NUR 7802 DNP Practicum II (3) (135 contact hours) ◆ 3

Trimester 11

NUR 7573 FNP Role Practicum III (5) (225 contact hours) ◆ 5

Trimester 12

NUR 7803 DNP Practicum III (4) (180 contact hours) ◆ 4

Total Credit Hours for Core Courses 71*Students in Arkansas must complete 72 credit hours***Ready to go? Have questions? Connect with a USAHS Enrollment Advisor at (800) 241-1027 or email us at enroll@usa.edu**

- Course requires practicum hours.
- ◆ Course offers optional immersion.

See page 20-21 for DNP admission requirements and how to apply!

*Time to completion may vary by student, depending on individual progress, credits transferred and other factors.



TAKE ON A NEW CHALLENGE

DNP ADMISSION REQUIREMENTS

To be considered for admission to the Doctor of Nursing Practice (DNP) program, candidates must possess or provide evidence of the following:

- BSN-entry DNP: Bachelor of Science in Nursing (BSN) degree with a cumulative GPA of 3.0 or higher on a 4.0 scale
- MSN-entry DNP: Master of Science in Nursing (MSN) degree with cumulative GPA of 3.0 or higher on a 4.0 scale
- Official transcripts from each college or university previously attended
- An unrestricted/unencumbered registered nurse (RN) license in the state of residence
- Professional resume or CV demonstrating the equivalent of one full-time year of experience as a registered nurse by the time you start your first practicum course
- Essay of approximately 500 words describing your short- and long-term career goals and how you plan to achieve them
- Comprehensive background checks requiring fingerprints and drug screens will be administered after acceptance into the program and at the applicant's expense. A felony charge and/or conviction may affect a graduate's ability to sit for the certification examination or to attain state licensure.
- Two professional references from a nurse educator, preceptor or immediate supervisor

Candidates may also be invited for an interview.

More information on admission requirements and how to apply is available on the Doctor of Nursing Practice page at usa.edu, including additional requirements for those who completed their undergraduate education abroad.



DNP APPLICATION REQUIREMENTS

We're here to support you on your education journey.
Begin your application today!

1. Before You Apply

Be sure you have a BSN degree and an active, unencumbered RN license.



Request transcripts from each higher education institution you've attended. Have them emailed or mailed to USAHS.



Use Nursys to obtain a copy of your nursing license.

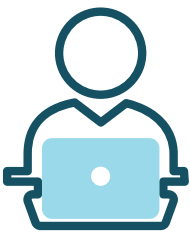


- Update your professional resume, showing 2,000 hours as an RN by the time of your first practicum.
- Write your entrance essay.



Line up two professional references.

2. Fill Out Your Application



Create an account to begin the free online application on our website.



Under the Admissions Documents tab, follow the directions to upload your nursing license, resume and essay.



Input your references' contact information.



Click "Submit for Review." Contact your EA so they can review your application and move it forward to Admissions.

HAVE QUESTIONS?

Contact an Enrollment Advisor today at enroll@usa.edu!

PG CERTIFICATES

ADD A SPECIALTY TO YOUR ADVANCED DEGREE

The USAHS online Post-Graduate Nursing Certificates are designed for nursing students who have completed a Master of Science in Nursing (MSN) degree or a Doctor of Nursing Practice (DNP) degree. Offered in two NP role specialties, the program provides a pathway into advanced clinical practice for nurses looking to grow their careers and broaden their foundational knowledge.

Take the next step in your career

The specialty curricula of our Post-Graduate Nursing Certificates are designed to prepare you to take on more responsibility or change your career trajectory and achieve your next career goal.

In just five to six trimesters* you'll be on the way to a rewarding new role.

Our Post-Graduate Nursing Certificates provide individualized pathways for nurses with at least an MSN to grow their careers in advanced clinical practice.



PG CERTIFICATES

NP ROLE SPECIALTIES FOR YOUR POST-GRADUATE NURSING CERTIFICATE

Family Nurse Practitioner

Family nurse practitioners play a critical role in improving the primary patient care experience. As an FNP graduate and advanced practice nurse, you'll partner with families across the lifespan to promote preventative care, diagnose conditions and treat acute and chronic illnesses.

Students who choose the FNP will have online coursework and one required on-campus clinical intensive. A practicum of 585 hours is required along with 31 credit hours. This role specialty is designed to be completed in five trimesters.*



Psychiatric Mental Health Nurse Practitioner (APRN Entry & Non-APRN Entry)

Offered in two entry pathways depending on your previous qualification, the Psychiatric Mental Health Nurse Practitioner role specialty provides the skills you need to deliver a full range of specialized services for mental health and psychiatric care and treatment.

The program consists of:

- Online coursework + one on-campus clinical intensive
- 28–37 credit hours (depending on entry pathway)
- 585 practicum hours
- 5–6 trimesters* (depending on entry pathway)

*Time to completion may vary by student, depending on individual progress, credits transferred and other factors.



POST-GRADUATE NURSING CERTIFICATE CURRICULUMS

Depending on the role specialty you choose, your path to an advanced clinical nursing career is a five to six trimester* commitment, and we'll be with you all the way.

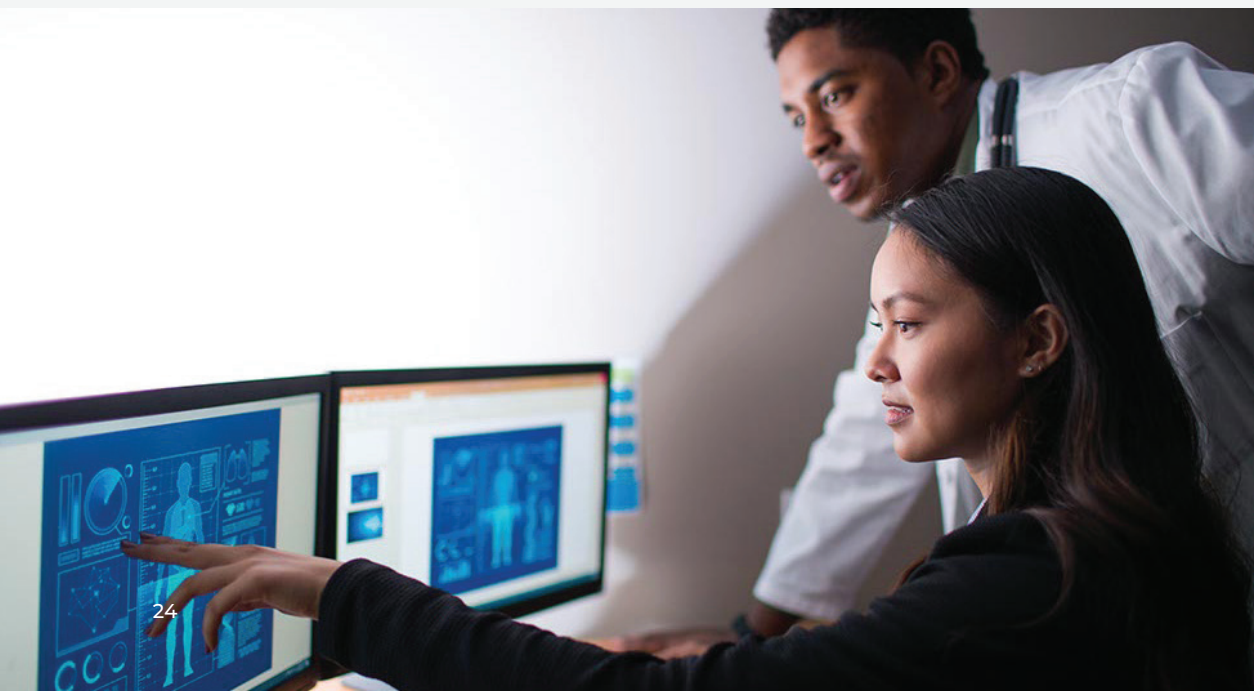
MSN/DNP ENTRY

Family Nurse Practitioner Curriculum

The online Post-Graduate Certificate Family Nurse Practitioner program includes three practica and one on-campus intensive. But don't worry. Our clinical concierge helps you find the right practica placement when you need it so you stay on track with your program. Your practicum faculty stays with you throughout your program. The PG Certificate FNP program is designed to be completed in five trimesters,* which includes 585 contact hours.

Post-Graduate Certificate Family Nurse Practitioner Role Specialty	Credit Hours
NUR 7610 Advanced Physiology and Pathophysiology	3
NUR 7560 Advanced Pharmacology	3
NUR 7580 Advanced Health Assessment and Differential Diagnosis	3
NUR 7570 Primary Healthcare of the Family I REQUIRED INTENSIVE	3
NUR 7571 FNP Role Practicum I (180 contact hours) ♦	4
NUR 7575 Primary Healthcare of the Family II	3
NUR 7572 FNP Role Practicum II (180 contact hours) ♦	4
NUR 7585 Primary Healthcare of the Family III	3
NUR 7573 FNP Role Practicum III (225 contact hours) ♦	5
Total Credit Hours for the Family Nurse Practitioner Role Specialty	31

*Time to completion may vary by student, depending on individual progress, credits transferred and other factors.



Psychiatric Mental Health Nurse Practitioner —APRN-Entry Curriculum

This role specialty is designed to be completed in five trimesters* and requires a total of 585 contact hours. If you are already an APRN, your course of study will be 28 credits, which should take five trimesters, or 1.7 years.*

Post-Graduate Certificate PMHNP Role Specialty	Credit Hours
NUR 7310 Advanced Neurobiology and Psychopathophysiology	3
NUR 7315 Advanced Psychopharmacology	3
NUR 7330 Psychotherapy for Psychiatric Mental Health Nurse Practitioner Practice	3
NUR 7350 PMHNP: Acute and Chronic Management of Child/Adolescent with Psychiatric Mental Health Conditions	3
NUR 7541 PMHNP Role Practicum I Child & Adolescent Populations (180 contact hours) ◆	4
NUR 7375 PMHNP: Acute and Chronic Management of the Adult and Older Adult with Psychiatric Mental Health Conditions	3
NUR 7542 PMHNP Role Practicum II Adult and Older Adult Populations (180 contact hours) ◆	4
NUR 7543 PMHNP Role Practicum III Diverse/Special Populations (225 contact hours) ◆	5
Total Credit Hours for the PMHNP Role Specialty	28

Ready to go? Have questions?
Connect with a USAHS Enrollment Advisor at (800) 241-1027 or email us at enroll@usa.edu

MSN/DNP ENTRY

Psychiatric Mental Health Nurse Practitioner —Non-APRN-Entry Curriculum

This role specialty is designed to be completed in six trimesters and requires a total of 585 contact hours. If you are not already an APRN, your course of study will be 37 credits, which should take six trimesters, or two years.*

Post-Graduate Certificate PMHNP Role Specialty	Credit Hours
NUR 7610 Advanced Physiology and Pathophysiology	3
NUR 7560 Advanced Pharmacology	3
NUR 7580 Advanced Health Assessment and Differential Diagnosis	3
NUR 7310 Advanced Neurobiology and Psychopathophysiology	3
NUR 7315 Advanced Psychopharmacology	3
NUR 7330 Psychotherapy for Psychiatric Mental Health Nurse Practitioner Practice	3
NUR 7350 PMHNP: Acute and Chronic Management of Child/Adolescent with Psychiatric Mental Health Conditions	3
NUR 7541 PMHNP Role Practicum I Child & Adolescent Populations (180 contact hours) ◆	4
NUR 7375 PMHNP: Acute and Chronic Management of the Adult and Older Adult with Psychiatric Mental Health Conditions	3
NUR 7542 PMHNP Role Practicum II Adult and Older Adult Populations (180 contact hours) ◆	4
NUR 7543 PMHNP Role Practicum III Diverse/Special Populations (225 contact hours) ◆	5
Total Credit Hours for the PMHNP Role Specialty	37

◆ Course offers optional immersion.

See page 26-27 for admission requirements and how to apply! ►

*Time to completion may vary by student, depending on individual progress, credits transferred and other factors.

GROW YOUR CAREER

POST-GRADUATE NURSING CERTIFICATE ADMISSION REQUIREMENTS

To be considered for admission, a candidate must submit an online application, which includes the following:

- A Master of Science in Nursing (MSN) or Doctor of Nursing Practice (DNP) with a cumulative GPA of 3.0 or higher on a 4.0 scale
- Official transcripts from each college or university previously attended
- Verified professional nursing license; licensure status must be maintained throughout the entire program
 - FNP: Evidence of an unrestricted/unencumbered registered nurse (RN) license
 - Psychiatric Mental Health NP: Evidence of an unrestricted/unencumbered RN license (MSN-entry) or APRN license (DNP-entry)
- Professional resume or CV showing an equivalent of one full-time year of experience (2,000 hours) as a registered nurse by the start of your first practicum
- Essay demonstrating scholarly writing of approximately 500 words describing your short- and long-term career goals and how you plan to achieve them
- Two professional references, one from a nurse educator familiar with your ability to do academic work and one from an immediate supervisor (e.g., nurse manager), preceptor or mentor familiar with your clinical skills
- A comprehensive background check requiring fingerprints and drug screen will be administered after acceptance into the program and at the applicant's expense. A felony charge and/or conviction may affect a graduate's ability to sit for the certification examination or to attain state licensure.

More information on admission requirements and how to apply is available on the Post-Graduate Nursing Certificates page at usa.edu, including additional requirements for those who completed their undergraduate education abroad.



POST-GRADUATE NURSING CERTIFICATE APPLICATION REQUIREMENTS

We're here to support you on your education journey.
Begin your application today!

1. Before You Apply

Be sure you have a BSN or MSN degree and an active, unencumbered RN license.



Request transcripts from each higher education institution you've attended. Have them emailed or mailed to USAHS.



Use Nursys to obtain a copy of your nursing license.

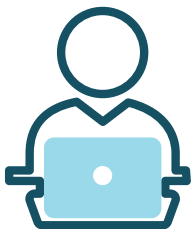


- Update your professional resume, showing 2,000 hours as an RN by the time of your first practicum.
- Write your entrance essay.



Line up two professional references.

2. Fill Out Your Application



Create an account to begin the free online application on our website.



Under the Admissions Documents tab, follow the directions to upload your nursing license, resume, and essay.



Input your references' contact information.



Click "Submit for Review." Contact your EA so they can review your application and move it forward to Admissions.

HAVE QUESTIONS?

Contact an Enrollment Advisor today at enroll@usa.edu!

ADVANCE WITHIN A THRIVING PROFESSION

**Do you want to advance your credentials and
open more doors in your nursing career?**

USAHS' online nursing programs offer a supportive, flexible and personalized grad school experience. You will work with your faculty and academic advisors to select a study plan that fits your busy life.

**Scan the QR code to see what our
School of Nursing can offer to you.**





UNIVERSITY of
ST. AUGUSTINE *for*
HEALTH SCIENCES

usa.edu

San Marcos, CA Campus

700 Windy Point Drive
San Marcos, CA 92069

St. Augustine, FL Campus

1 University Boulevard
St. Augustine, FL 32086

Miami, FL Campus

Douglas Entrance North Tower
800 S. Douglas Road, Suite 149
Coral Gables, FL 33134

Austin, TX Campus

5401 La Crosse Ave
Austin, TX 78739

Dallas, TX Campus

901 W Walnut Hill Lane, Suite 210A
Irving, Texas 75038

General inquiries: (800) 241-1027





UNIVERSITY *of*
ST. AUGUSTINE *for*
HEALTH SCIENCES

800-241-1027 | usa.edu



[uofstaug](https://www.instagram.com/uofstaug)



[uofstaug](https://www.tiktok.com/@uofstaug)



[universityofstaugustine](https://www.facebook.com/universityofstaugustine)



[universityofstaugustine](https://www.youtube.com/universityofstaugustine)



find us on LinkedIn